

STEPS TO SUCCESS

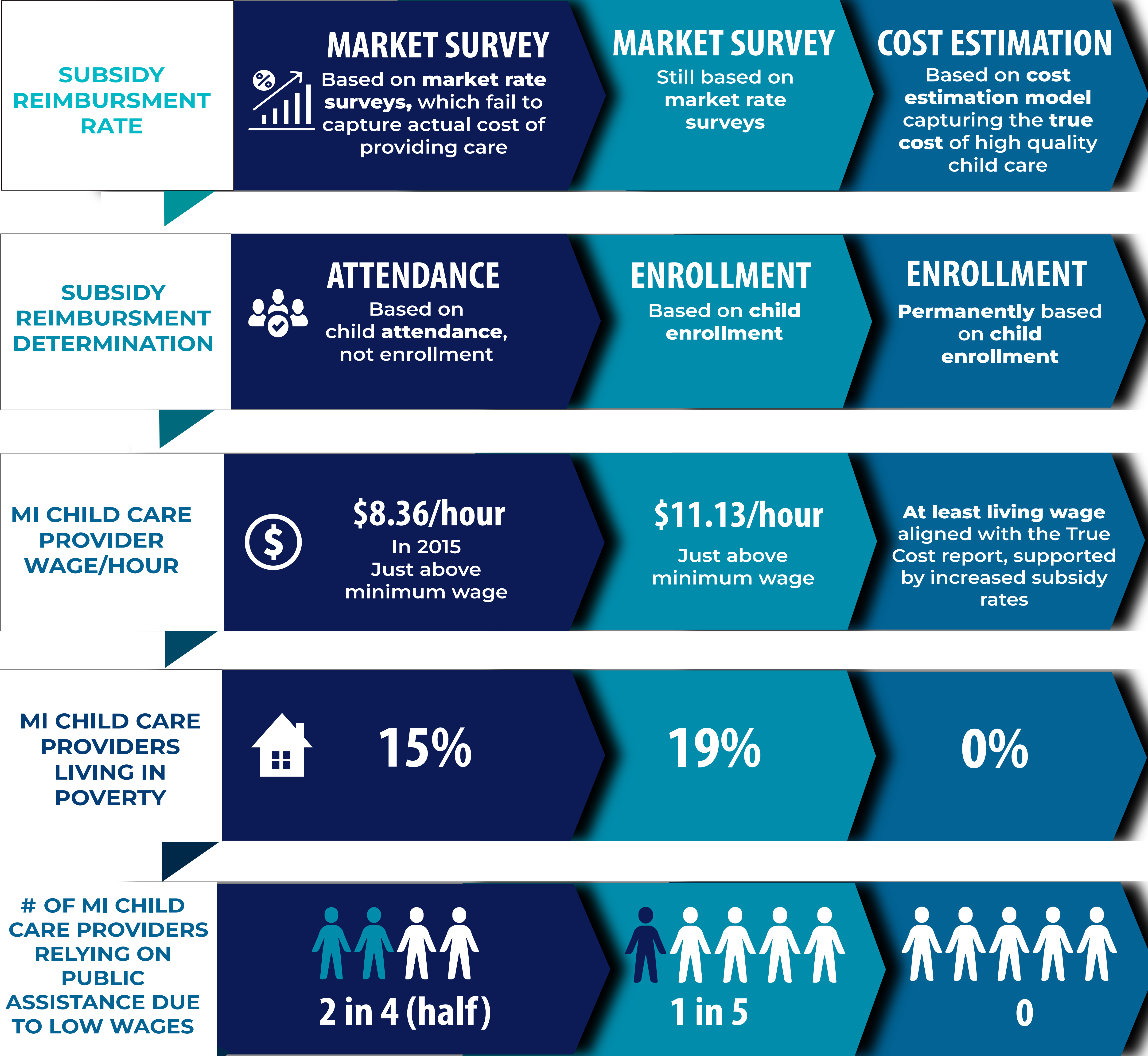
Michigan's Child Care Subsidy Program

THE PROVIDER EXPERIENCE



The child care subsidy program helps low-income families afford child care while parents work or attend school. However, many child care providers cannot afford to accept subsidies because of low reimbursement rates, which directly impact staff wages & program quality. Learn how Michigan child care subsidies have evolved & what program changes will support child care providers.

WHERE WE WERE (AS OF 2015) WHERE WE ARE WHERE WE NEED TO GO



Significant long-term investments are needed to increase program accessibility and lower child care costs for working families, ensuring that all families can **"Make it in Michigan"**